

Gym Dividers

DRAPER gym dividers are constructed of the highest quality reinforced vinyl. Select a vinyl-coated polyester mesh to facilitate air flow, a tough solid vinyl to provide a visual barrier between play areas or a combination of mesh on top and solid on the bottom. (See physical descriptions below.)

- Instant reversing motor—when the key is turned the opposite way the curtain is traveling, the motor shuts off momentarily and then reverses direction.
- All hardware is heavy-gauge stampings or of welded construction.

Gym Divider Vinyl and Mesh Selections

- **General:** Solid fabric is a durable vinyl-coated polyester. Mesh fabrics are vinyl-coated polyester mesh woven from .025 yarn in a one-over-one weave pattern. The yarn is composed of 80% pigmented vinyl and 20%, 840 denier polyester.
- **Weight:** Solid fabrics average 18 oz. (optionally available: avg. 22 oz. per sq. yard). Mesh averages 9.0 oz. per sq. yard.
- **Resistance to Rot & Mildew:** Excellent.
- **Ultraviolet Resistance:** Excellent.
- **Flammability:** Rated as self extinguishing by the California State fire Code (solid: F-31.5 and F-140; mesh: F-230) and Class A Rated in accordance with requirements of NFPA-101.
- All seams are electronically welded with a 1" full contact weld.
- Available in a wide variety of vinyl and mesh colors.

Dimensions, drawings, specifications and color selections:

www.draperinc.com/go/GymDivider.htm.

Walk-Draw Gym Divider

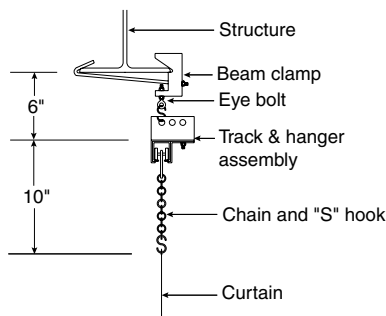
A WALK-DRAW gym divider is the most cost-effective way to divide floor space in a recreational facility. The idea is simple: suspend the vinyl curtain from an overhead track. While walking, pull the curtain into place, or pull it back into its compact storage area. Curtain always moves at operator's pace because ball bearing wheels ensure a smooth gliding action. DRAPER designs tracks to accommodate the shape and size of sports areas: box in a court with four curtains or radius the track to encircle the area.

Select a solid vinyl, a vinyl-coated mesh or a combination of both. Several solid vinyl colors are readily available.

- In the stacked position, the WALK-DRAW requires only a 6" clearance on either side of the track's center line.
- Total hanging weight is, on average ½ lb. per sq. ft.
- Stacking space is 1/8" per foot of divider.
- Track supports do not exceed 8' on center.

Dimensions, drawings and specifications available at:

www.draperinc.com/go/WalkDrawDivider.htm.



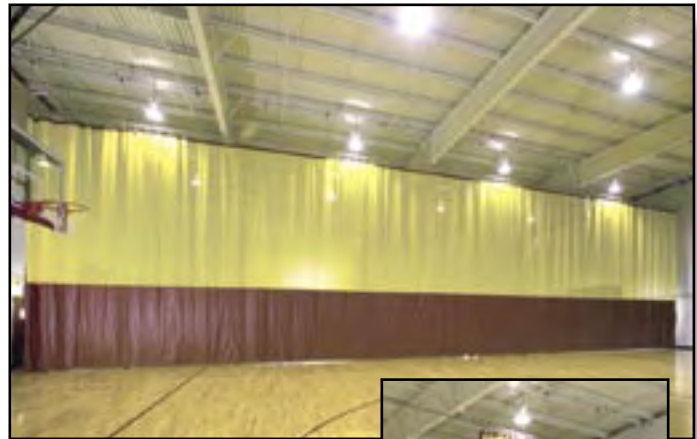
Sutcliffe Hall Gymnasium, Centre College, Danville, KY. Project included in Athletic Business' June 2006 issue, 19th Annual Architectural Showcase. Architect: Hastings & Chivetta Architects Inc., St. Louis, MO. Photography © Sam Fentress, St. Louis, MO. Products include: (2) TF-20 and (6) TF-20B Backstops and (2) Ridge-Fold Dividers.

Curtain Lok™ Divider Curtain Safety Device

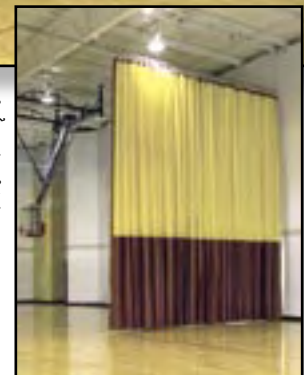
DRAPER's innovative independent safety device locks drive shaft operated curtains. Based on the same technology as our POSILOK SAFETY STRAP (see page 10), the CURTAIN LOK is directly speed sensitive and instantly locks the curtain drive shaft whenever the speed exceeds 1/2' per second.



- The mechanism is not direction sensitive.
- The CURTAIN LOK is compatible with DRAPER FOLD-UP, ROLL-UP, RADIUS-FOLD and TOP-ROLL DIVIDER CURTAINS, as well as similar style curtains from other manufacturers.



Hellstern Middle School, Springdale, AR. Architect: Wittenberg, Delony & Davidson Architects, Little Rock, AR. Photography © Curtis Photographics, Memphis, TN.

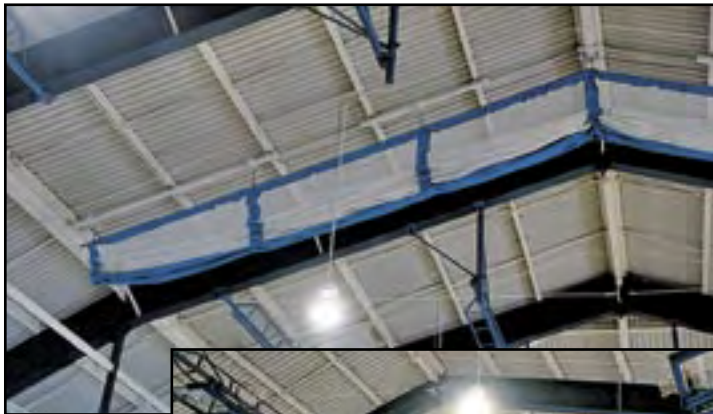


Ridge-Fold Gym Divider

A DRAPER RIDGE-FOLD gym divider installs and folds up compactly along the slope of the roof. The accordion fold-up action is achieved by lift cables passing through grommets as the bottom tube is raised. If the roof of your building peaks in the center or to one side, then a RIDGE-FOLD is the gym divider for you. Tell us the height of the peak and eaves and desired curtain width.

- Only DRAPER uses hinged pipe in the top and bottom pockets, allowing curtain to follow contour of building.
- Simple to install. Hoist cables are pre-attached to the drums at the motor end: guide them to the appropriate pulley, lace down through the grommets and attach to concealed weights in the bottom pocket.
- Engineered for reliability. Outer edge hems are triple turned with double welds.

Dimensions, drawings and specifications available at:
www.draperinc.com/go/RidgeDivider.htm



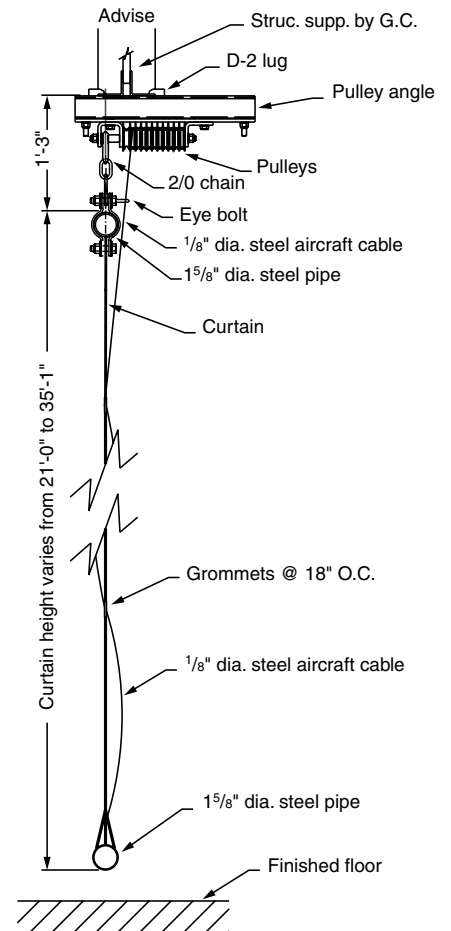
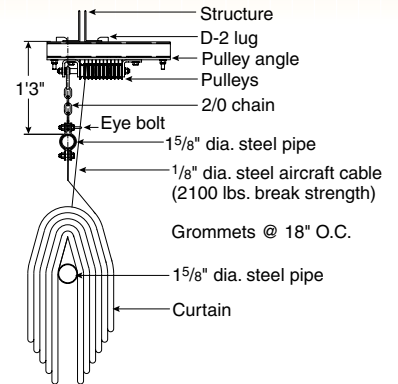
Ridge-Fold Gym Dividers at Warwick Academy, Warwick, Bermuda. Architect: MBP Limited, Hamilton, Bermuda. Photography © Art Simons, Photographic Associates, Pembroke, Bermuda.



Each hoist cable terminates at an individual drum that is part of the C-Facemotor and winch system. The individual drums are sized in variable ratios, allowing the divider to contour to the roof structure.

Draper designs the size and look of your divider curtain to match your facility.

A solid vinyl bottom portion of the divider will create a visual barrier when privacy is a concern. Mesh on top will complete the balance of the divider, giving you the division of space and at the same time, facilitate air flow.



Fold-Up Gym Divider

Choose DRAPER'S FOLD-UP gym divider for a reliable way to divide one area into two. Accordion fold-up action is accomplished by lift cables passing through grommets as the bottom tube is raised. It folds and unfolds without any horizontal cables, ropes or pulleys. It's engineered with heavy-gauge stampings or all-welded hardware.

Choose a FOLD-UP gym divider made in either all solid vinyl, vinyl-coated polyester mesh or a combination of mesh on top and solid on bottom.

- Vertical seams.
- Outer edge hems are triple turned with double welds.
- Total hanging weight is, on average, 1/2 lb. per sq. ft.
- Stacking dimension is approximately 2 1/2'.
- A FOLD-UP divider can be made in virtually any size, but cannot be cutout for bleachers and doors.
- A minimum of 6" of clearance is required between vertical edges and fixed objects, but we suggest you allow more space for walking around ends of divider.

Dimensions, drawings and specifications:

www.draperinc.com/go/FoldUpDivider.htm.

For maximum safety, specify Draper's Curtain Lok on Fold-Up or Radius-Fold gym divider. See page 16 for details.

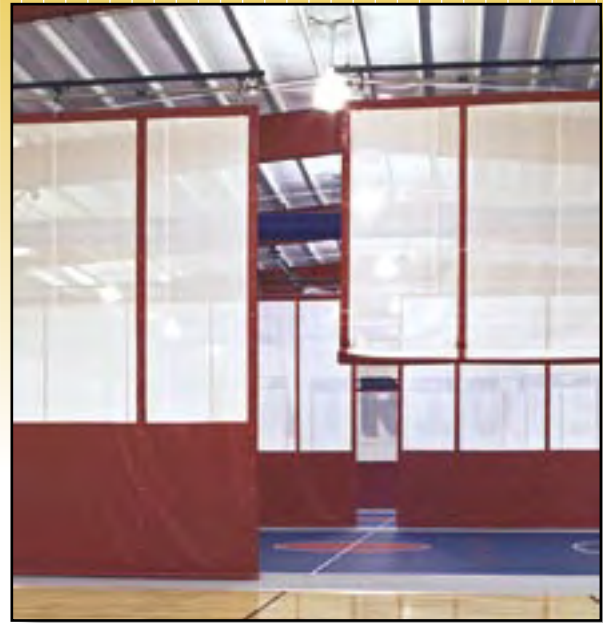
Radius-Fold Gym Divider

DRAPER'S RADIUS-FOLD gym divider solves the problem of separating a perimeter running track from the playing courts inside a field house or multi-purpose facility. DRAPER achieves a curve with a single piece of curtain by segmenting the drive pipe with double universal joints, while others use single universal joints. The accordion fold-up action is accomplished by lift cables passing through grommets as the bottom tube is raised.

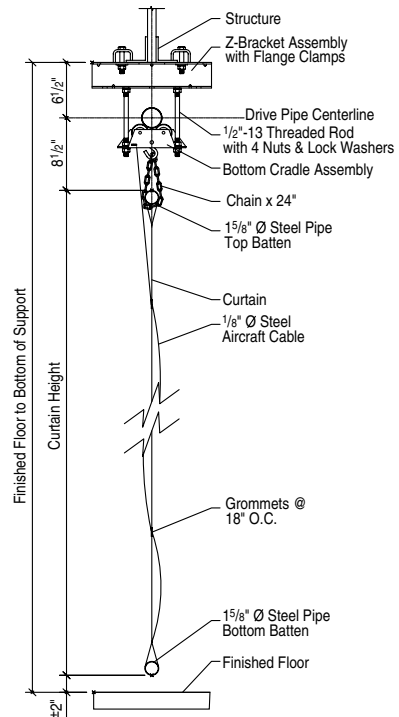
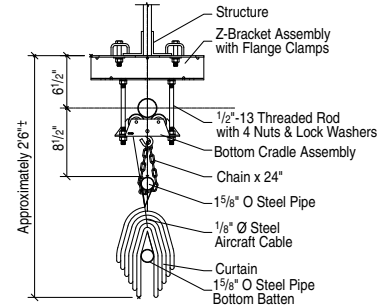
- Folds/unfolds without horizontal cables, ropes or pulleys.
- Curtain seams are vertical.
- Outer edge hems are triple turned with double welds.
- Total hanging weight is, on average, 1/2 pound per sq. ft.
- Minimum of 6" of clearance is required between vertical edges of adjoining curtains and fixed objects.
- The stacking dimension is approximately 30".



Double universal joint insures smooth operation and allows for bends as great as 45°.



Seeger Memorial High School, West Lebanon, IN. Installation includes (10) Fold-Up Dividers and (4) Radius-Fold Dividers (below). Architect: PYRAMID Architecture/Engineering & Construction Administration, Inc., Indianapolis, IN. Photography: Wayne Williams, Indianapolis, IN.



Dimensions, drawings and specifications available at:
www.draperinc.com/go/RadiusDivider.htm.

Top-Roll Gym Divider

A TOP-ROLL gym divider is the ideal way to divide space in facilities with low ceiling heights. The curtain rolls neatly on the drive pipe so the stacking dimension is only 14".

DRAPER's clean design does not require belts, cables or complicated torsion arms to make our curtain operate. For curtains up to 100' wide, our TOP-ROLL uses a single 1 HP motor located on one end of curtain, which simplifies the wiring diagram and saves money on the electrical wiring.

- Compare: Competitors use tubular motors at each end of the divider requiring electronic synchronizers and electrical service at each end!

All electrical connections are made at and stay at ceiling level.

- Compare: A competitor's center roll divider has motors in the middle of the curtain, requiring the electrical connections to travel as far down as half the height, an undesirable situation if the gym has a balcony or bleachers perpendicular to the ends of the curtain.

The motor is mounted externally allowing it to cool properly.

- Compare: Tubular motors, used by others, only allow one or two consecutive cycles before thermal overloads trip, meaning the user has to wait several minutes before running curtain again.

Solid vinyl available in 18 oz. or 22 oz. weights, with all horizontal welds. Any combination of mesh and vinyl height available. Total hanging weight is, on average, ¾ lb. per sq. ft.

Outer edge hems are double turned and double welded to prevent fraying.

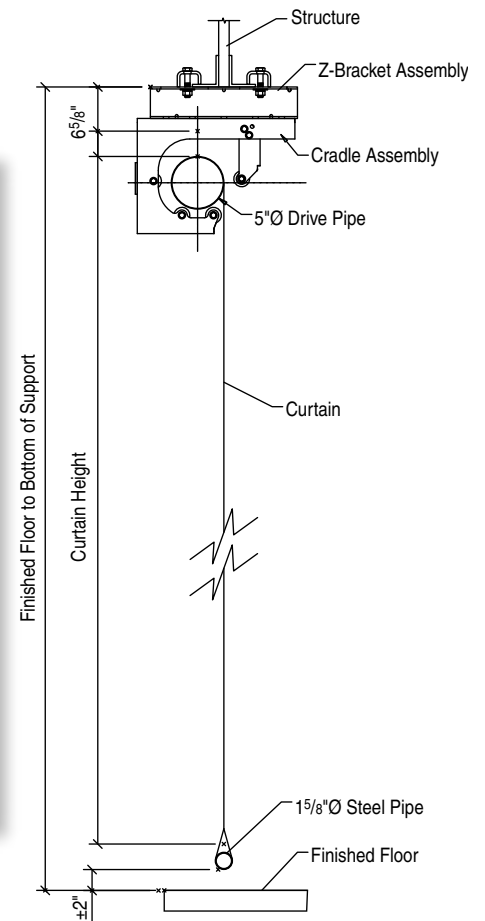
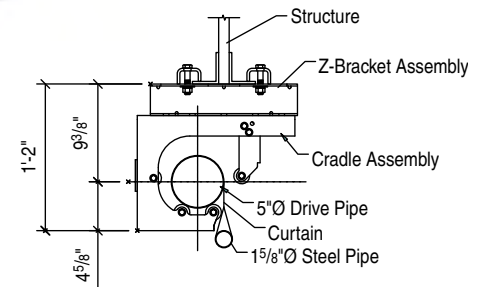
- Compare: Other top-rolling and center-rolling dividers on the market have a raw cut edge that frays over time.

Dimensions, drawings and specifications available at:

www.draperinc.com/go/TopRollDivider.htm.



At left: electric winch provided with Fold-Up, Roll-Up, and Top-Roll gym dividers.



For maximum safety, specify Draper's Curtain Lok on Top-Roll gym divider. See page 16 for details.



Harris Elementary, Greenfield, IN. Photography: Wayne Williams, Indianapolis, IN.

Draper's Top-Roll gym divider has a 5-year warranty.

Roll-Up Gym Divider

A ROLL-UP gym divider is a convenient and simple way to divide an area. The curtain hangs from overhead supporting steel structures. Easy to operate: just turn a key, and the curtain unrolls as needed or rolls up for storage.

The white polyester webbing belts that guide the roll up action are flexible and cut straight and true to insure proper wrapping of the belt onto the drive pipe. These thin, yet very strong belts take up less space as they wind onto the drive pipe, putting less strain on the motor.

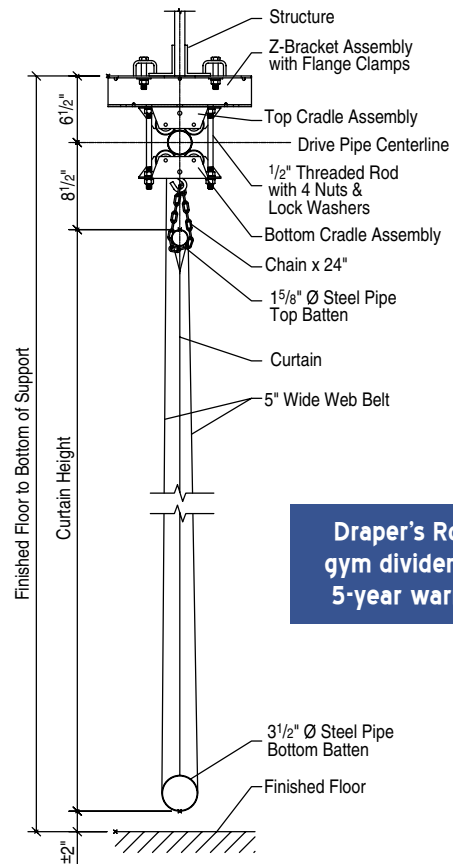
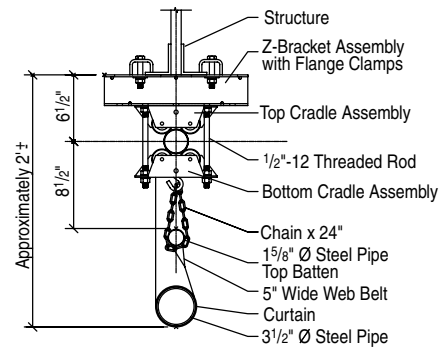
- All hardware is heavy-gauge stamping or welded construction
- Vinyl-coated polyester material is available in 18 oz. and 22 oz.
- Total hanging weight is, on average, ½ lb. per sq. ft.
- Seams run horizontally the full width of the curtain.
- The stacking dimension is approximately 2'.
- Needs minimum of 6" of clearance between vertical edges and fixed objects.

Dimensions, drawings and specifications available at: www.draperinc.com/go/Roll-Up-Divider.htm.



University of Alabama, Student Recreation Center, Tuscaloosa, AL. Collegiate Citation Winner of Physical-Education Facilities/Recreation Centers, Education Interiors Showcase, American School & University magazine, August 2006. Architect: TMP Associates, Inc., Bloomfield Hills, MI. Photography © Curtis Photographics, Memphis, TN.

For maximum safety, specify Draper's Curtain Lok on Roll-Up gym divider. See page 16 for details.



Draper's Roll-Up gym divider has a 5-year warranty.